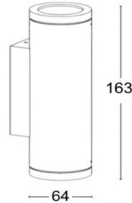
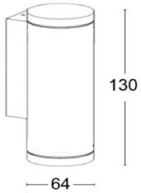
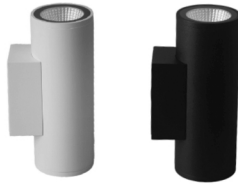


K12-2

K12-1



IEC 62717 LED-modules for general lighting – Performance requirements
IEC 62722-2-1 Particular requirements for LED luminaires

High Lumen Efficacy 115lm/W
Body - Die cast aluminum housing with solvent free powder coating
Diffuser - PMMA polycarbonate pattern lens.
Glowing Wire Test - 850°
Temperature - $t_a=20\text{ }^\circ\text{C} \sim t_a \text{max}=50\text{ }^\circ\text{C}$
Class - III

Simple and easy appearance, in line with contemporary aesthetic concept. The product has the structure and appearance design patent. The lamp body adopts high-pressure cast aluminum and aluminum alloy, the surface is coated with outdoor used powder, double anti-corrosion to extend service life. This lawn lamp series uses LED. High efficiency constant current driver, ensure the light source is maximum used.

FIELDS OF APPLICATION

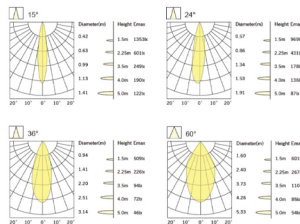
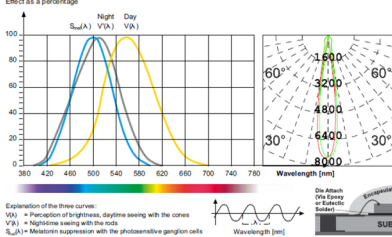
Landscape, Facade, trees, palm trees, green areas

12x2W:Ø64 x H130mm

12W:Ø64 x H163mm

Item No.	Wattage	Lumen	Color Temperature	IP	vollt	CRI	PF	Beam Angle
K12-BK-2	2x12 W	151lm/W	3000k	IP 65	220	90	0.9	36°
K12-WH-2	2x12 W	151lm/W	3000k	IP 65	220	90	0.9	36°
K12-BK-1	12 W	151lm/W	3000k	IP 65	220	90	0.9	36°
K12-WH-1	12 W	151lm/W	3000k	IP 65	220	90	0.9	36°

Relative spectral perception of brightness and melanopic effect



Technical Details

Light Sour	Wall light
Driver	on/off, Dimmable
Voltage	Phase dimming, 1-10
Life Span	220-240V /24V
Temperature	35000Hr
Diffuser	$t_a=20\text{ }^\circ\text{C}-50\text{ }^\circ\text{C}$

Product Details

Finish	Black, white
Material	Die cast aluminum
Application	-----
Warranty	3 YEARS
Class	-----

LED life time		Operating time 1.000 h											
Lamp Lumen Maintenance Factor	Lamp Survival Factor	1	10	20	30	40	50	60	70	80	90	100	
L80	50.000 h	LLMF	1	0.96	0.92	0.88	0.84	0.80	0.76	0.72	0.68	0.64	0.60
		LSF	1	1	1	1	1	1	0.99	0.99	0.99	0.99	0.98
L80	100.000 h	LLMF	1	0.98	0.96	0.94	0.92	0.90	0.88	0.86	0.84	0.82	0.80
		LSF	1	1	1	1	1	1	1	0.99	0.99	0.99	0.99

